

Sunshine Region Retreads

1434 Golden Park Ct.

Tallahassee, FL 32303



November/December 2013 Newsletter

Mark Your Calendar

2014 Events

Feb 8 Eastern PA Winter Banquet at Yoder's

March 7-16 Daytona Bikeweek, Daytona, FL

March 15 Sunshine Region Retreads Fellowship Luncheon , Daytona, FL

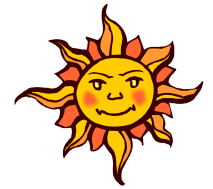
April 25-26-27 Leesburg Bikefest, Leesburg, FL

May 5-8 International Retread Rally, Branson, MO

May 15-17 Mid-Atlantic Retread Rally, Bird-In-Hand, PA



Retreads Motorcycle Club International, Inc. Sunshine Region



November/December 2013 Newsletter



Sunshine Region Directors

Jack & Carol Schardine

jackschardine@comcast.net

850 212 1930

Area Reps

North Central

Wayne Howell

wehowell@windstream.net

386 659 2419

South East

Erik Turner

et8631@bellsouth.net

321 727 8631

Webmaster

Robert Farris

webmaster@floridaretreads.org

352 793 8199

Website www.floridaretreads.org



Sunshine Retreads

Welcome back Snowbirds !!! We miss you during the summer.

I want to start by saying I have decided to not sell the Retread trailer. There is too much love and work that went into it. We do however need to help Bobby Farris clean it up and start using it. It is my hope that we can schedule some events where it can be used. I have been told a lot of the current membership did not even know that we owned a trailer. It is equipped with pots and pans, tables, burners and audio equipment. Any Sunshine Retread member is welcome to use it.



We have not had much luck finding a location in the Leesburg area to have a Fellowship Luncheon during Leesburg Bikefest. I have again reserved Duff's Cafeteria in Daytona during Bike Week (March 15th). If someone is able to find a place in Leesburg, we can schedule a second event. I suggest we could also schedule an outdoor event using our trailer and equipment.

The 2014 membership cards are on their way in. We will again have two free memberships for the winners of an **Early Bird** registration.



Inside

Meeting Schedule	3
Treasure Coast news	4
Leesburg news	5
Tallahassee news	6
Jacksonville news	7
For Sale	8
Mid- Atlantic flyer	9
Fellowship Luncheon	10
International Rally	11
Application	12



In closing, Carol and I wish all a very happy and blessed Thanksgiving and a merry and glorious Christmas.



Sunshine Region Retreads Meeting Schedule

Homosassa Nature Coast Retreads

BOATHOUSE RESTAURANT 1935 S.E. Hwy 19 CRYSTAL RIVER, FL 34429

Saturday, 8am We have breakfast and ride follows

Jacque Iverson 352 637 4693 jiverson4@tampabay.rr.com



Inverness Retreads

B&W Rexall Drug Store, Citrus Plaza, 214 S. Hwy Inverness

Sunday & Wednesday 9am Ride follows

Bob Fernandes 352 341 5762 fernandes.robert88@yahoo.com



Jacksonville North East Florida Retreads

Meeting places and ride destination are announced weekly via email.

Ride schedule is determined quarterly during a chapter outing and posted via email.

Lynn Keen 904 259 1531 jlkeen1@gmail.com

Richard Axelberg 904 268 1444 riax@comcast.net

Leesburg Retreads

Cracker Barrel Restaurant 9450 US 441 Leesburg

Tuesday 8:00AM

Gary Weber 352 728 3964 gwandcw@centurylink.net

MaryAnn Etter 352 323 8388 etteracres@embarqmail.com



Melbourne Retreads

Golden Corral Restaurant Palm Bay Road , Palm Bay

Tuesday 5pm

Erik Turner 321 727 8631 et8631@bellsouth.net

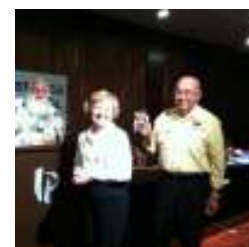


Port St. Lucie Treasure Coast Retreads

Cross Roads Rest. 5050 128th Ave. Okeechobee

Every 2nd Sunday, 9am

Bob and Karen McGhee 772 528 4547 lobosmcg@aol.com



Tallahassee Retreads

The Country Kitchen Rest. 5810 N. Monroe St. Tallahassee Thursday 9am

Red Hills Honda 4003 W. Pensacola St. Tallahassee Saturday 9am

Jack Schardine 850 212 1930 jackschardine@comcast.net

Treasure Coast News by Bob and Karen McGhee

For those that didn't get to ride to Solomon's Castle with us last Saturday, you missed a good time. The weather was great and so was the ride. When we got into Okeechobee for breakfast, Bob's temperature gage said 59 degrees..Now that was cold but loved it. After breakfast we rode on to Solomon's Castle and saw deer and bald eagles and wild turkeys along the roadside. We toured the castle and had lunch in the Boat In The Moat. Several people even got to talk to the creator of all the artwork and was fascinated by his stories.

December 7 is the Pioneer Days at Fort Christmas. I had mentioned that we should plan on riding to Fort Christmas for a couple of hours and then ride to St. Augustine for the night. Only one couple said to me that they wanted to go. I spent all day Sunday calling hotels and motels whose rates I thought would be within most budgets. They are all booked up that weekend. That includes the motel we stayed at two years ago when we went. The hotels/motels within walking distance run from \$100 to \$250 a night. So after some discussion with the other couple, we decided we want to go regardless and will be making our own reservations. If anybody decides to go, you can (1) make your reservations at your choice or (2) call me and I'll let you know where we are staying. The hotels/motels are filling up fast. For those that just want to go to Fort Christmas, I'll have the plan on where to meet in the next newsletter.

December is our holiday party and I will update on when and where in the next newsletter.

Happy Thanksgiving to all and your families.

Bob and Karen McGhee

November 2013

Treasure Coast Retreads

Sunday	Monday	Tuesday	Wednesday	Thursday	Friday	Saturday
 <p>Kris and Rick's new baby. Congrats, it's a Goldwing!</p>	 <p>Solomon's Castle, it was a great ride.</p>	 <p>The gang at Solomon's Castle.</p>			1	2 8:00 AM - Meet at Dominics (Pt Pierce) 4:45 PM- Meet at Lobster Shanty (Vero)
3 8:00 AM- Meet at Captains Galley (FL Pierce)	4	5	6 9:00 AM Mystery Ride-Meet at Vero Truck Stop	7	8	9 8:00 AM Meet at PSL Civic Center-Ride to Harry & The Natives 2:00 PM- Meet at CJ Commons (Vero)
10 8:00 AM- Meet at Arby's Vero-Ride to Crossroads (Okeechobee)	11  Mike's new friend	12	13 9:00 AM Mystery Ride-Meet at Vero Truck Stop	14	15	16 8:00 AM - Meet at Too Jay's (Vero) 5:00 PM- Meet at Dominics (FL Pierce)
17 8:00 AM- Meet at Arby's Vero Ride to Marsh Landing (Fellsmere)	18	19	20 9:00 AM Mystery Ride-Meet at Vero Truck Stop	21	22	23 8:00 AM - Meet at PSL Civic Center, ride to Mulligans (Jen Bch) 5:00 PM-Meet at Woody's (Vero)
24 8:00 AM- Meet at PSL Civic Center-Ride to Too Jays (Vero)	25	26	27 9:00 AM Mystery Ride-Meet at Vero Truck Stop	28 	29	30 8:00 AM - Meet at PSL civic center Ride to Key West Diner (Jen. Bch) 5:00 PM-Meet at Soupman Comfort Grill (Vero)

Leesburg News

by MaryAnn Etter

Twenty nine of our bike buddies showed up today for breakfast at Cracker Barrel and a lovely ride. Since our Secy just got back from Penna after a six week hiatus we need to do some catching up.

Randall Sumner showed up every Tuesday at CB after the scheduled rides took a vacation just in case someone showed up to ride. He said sometimes two, three or four people would show up and then no one came so he jumped ship also. The rides started at the beginning of October. On oct 8th Randall Sumner won the 50/50 of \$20.00. On the 15th Gary Weber won \$20.00. On Oct 22 Ken (Grumpy) Weston won \$10.00. On October 29 Carol Weber won \$15.00 and today Jim Davis won \$20.00 since he gave MaryAnn Etter a hug and she drew the winning ticket!

Gary and Carol Weber led the ride today and even though it started out with showers it did clear up to be a beautiful day. They ended up at Jeremiah's Pub in Mt. Dora for one of their fabulous lunches. Today was Gary's birthday so we all sang to him. He's 55 years old today. Happy Birthday and many more ole man!

Next week we will be following Fred and Marge Hackett. Thanks Fred and Marge!

We welcomed some new members – Tom and Sandy Woods and Arnie and Doris Garris. Glad to have you on board.

Bob and Diana Evans brought a trike down from up north for their relatives, Rod and Linda Egner so they rode with us today. Then they will be going to their home in Sarasota, Fl. Welcome back anytime and give the Wingnuts a try out of Tampa.

Just a word of warning to those that have trikes - - Yesterday when unloading my trike off a trailer the overflow pan under the trike bottomed out on the point where the ramp meets the trailer breaking the plastic tank and spilling anti-freeze over the ground. I am having a new pan put on and a skid plate underneath to protect the overflow pan. Bond Bayse said he had the same problem and since he put a skid plate over the pan he has had no problem since.



Tallahassee News

by: Janice Gargus

A south Georgia tradition that features one of the area's four-legged friends continues with the 38th annual Mule Day in Calvary. Usually, between 60,000 and 90,000 people attend annually.

These include the *Longriders*, a group of horse riders and wagons that travel from Tifton to Calvary each year. Organizers said they've come through the area for about the last 10 years. A group of approximately 250 — including folks, horses, mules and wagons — spend the night in Old Boston, travel through the area to make camp in Beachton, and then travel to Calvary.

And lucky for us, we were there to wave and encourage them on.

We had lunch at this tiny café in Metcalf, and the *Longriders* just happened to come by and take the dirt road shortcut. Guess who had her camera ready?

You never know who you are going to see, or who you are going to meet, or what you are going to see on these wonderful motorcycle rides. If you aren't riding, come join us.

Photo of Mules at Mule Day



JACKSONVILLE NEWS - Submitted by Lynn Keen

Throughout this period our group has enjoyed a variety of rides to many great destinations. However the highlight would have to be what is affectionately known as "THE GEORGIA MOUNTAIN TRIP".

Five eager travelers left Callahan, FL on Oct 6th at about 7:00 am Sunday Morning. Our intended destination being a cozy log cabin outside of Suches, GA where we would meet up with the 6th member of our group. The early part of our trip was hampered by heavy fog which made the going stressful and slow. At least we didn't have to deal with the rain that was originally forecast. After about 2 hours of riding in heavy fog we lucked out and it cleared and the remainder of the trip was pleasant and uneventful. We arrived at the cabin at about 3:30 pm. Upon arrival we found our final member, who had driven in from NC relaxing on the back porch. After unloading and relaxing for a short time we headed for town for a bite to eat followed by a trip to Wally World to stock up on our food items for the remainder of the week.

Monday morning we awoke to temps in the high 40's and another occurrence of heavy fog but with a forecast for highs in the low 70's and sunny for the afternoon. Ate a quick breakfast suited up and headed out on our ride. Our destination was the Wheels Through Time Motorcycle Museum in Maggie Valley NC. After a fairly short run in the fog the weather gods smiled on us and we enjoyed clear sky and warm temperatures. Arrived in Maggie Valley about lunch time and found a small family dinner where we ate our fill and headed over to the Museum. I hadn't visited the museum for a couple of years and was impressed with the number of bikes that have been added to the display. It also seems like every nook and cranny of the building is crammed with interesting artifacts related to the early days of motorcycling. We spent probably an hour and a half there but one could easily spend a day or more and still not take in all that's there to be enjoyed. Had a quiet ride back to the cabin and popped a couple of gourmet frozen pizza's in the oven for supper.

The following morning we again awoke to a cool 45 deg but thankfully no fog in sight. We had planned about a 2 hour ride over to Tellico Plains, TN to visit a small motorcycle outfitter and a great little lunch shop where all the baked goods are made on site in a brick oven. I had programmed a route in my gps which should have put us in Tellico about 11:00 am. Unfortunately, the "BITCH IN THE BOX" as my gps is fondly known sent us on an interesting but less than direct route. We joked that we finally found the Middle Of Nowhere! We spent probably an hour wandering around narrow mountain roads in and around a TVA dam and associated lake before we found our way back to a road with a State ID. It wasn't all bad as we had some good riding, great weather and eventually found our way to the intended restaurant. Had a great lunch and spent about 2 1/2 hours riding back to the cabin sticking strictly to numbered routes. After a little relaxation we fired up the grill and prepared the evening meal and looked forward to a good nights sleep before beginning another fun filled day of mountain riding.

Wednesday we again experienced a beautiful cool mountain morning and decided that after the preceding day's rather long day of riding we would opt for a shorter and relaxing outing. With that in mind we headed out for Helen, GA. If your not familiar with Helen, it's a small tourist town that's modeled after an Alpine Village with many small and interesting shops and several great little restaurants. We arrive mid morning and spent a couple of hours browsing through many of the interesting boutiques where a few of our group indulged in some gourmet coffee, pastry, fudge and other assorted delicacies. We followed that up with a relaxing lunch seated on the veranda adjacent to the Chattahoochee River. Following lunch we enjoyed another relaxing ride through some beautiful mountain scenery and arrived back at our cabin and began preparation for our evening meal accompanied by a few adult beverages.

Thursday provided us with yet another spectacular mountain morning with the anticipation and getting one last ride over the mountain twisties before returning to FLAT LAND. With that in mind we headed out of Georgia into North Carolina. After a couple of hours we arrived at the north end of one of my favorite roads in the area, Wayah Rd. While not as challenging or as technical as the Dragon, it is a scenic route that follows the northern part of the Nantahala river and includes several small water falls and enough twists and turns to put a smile on my face. With one exception this was yet another great day. The exception was a finish nail in my rear tire. Prior to the trip I had purchased and installed an after market tire pressure monitor. After completing our run down Wayah road I noticed the monitor flashing which means that one of my tires had exceeded the low pressure limit that I had programmed into the unit. Upon closer examination it indicated that my rear tire was at 29 psi rather than the 40 which is normal. At that point I had not experienced any unusual handling and so decided to head off to find a business that might be able to help resolve my issue. Several miles down the highway we found a bike shop that agreed to inspect my tire. That is where we discovered the nail. The accommodating owner offered to sell me a replacement tire for \$400. With a deep desire to keep my \$400 and after a little arm twisting he agreed to plug the hole for me. Yea, I know your not supposed to plug bike tires but being a frugal individual I felt that the repair would get me safely home, which it did, where I could better manage the situation.

Friday morning we packed the bikes for the return trip back to our homes in Florida. The ride home was uneventful and our group arrived back in the Jacksonville area around 6:00pm. Overall we covered roughly 1500 miles and enjoyed roughly 600 miles of mountain riding in the north Georgia, North Carolina and Tennessee

FOR SALE

For Sale:

Motorcycle Cargo Trailer (pull behind cycle)

Aluminum Frame, Diamond plate & Black

With Chrome Wheels

Asking: \$ 850

Contact: Denny 352-637-4693 4693



FOR SALE

2003 HONDA GL 1800 CANDY-ORANGE GOLD WING CHAMPION TRIKE WITH MATCHING CUSTOM ESCAPE TRAILER. \$8000 IN ADD ON'S: CUSTOM HARTCO SADDLE, CB, FOG LIGHTS, PIN STRIPPING BY TJ, FLOORBOARD, HEEL TOE SHIFTER, TULSA WINDSHIELD, K PASSENGER FOOTREST, TURNDOWNS. HAS BEEN RAKED, HAS EZ STEER, SPOILER AND MUCH MORE. 57,600 GENTLE MILES. MUST SEE TO APPRECIATE THIS GARAGE KEPT BEAUTY. PACKAGE PRICE IS \$22,000. CONTACT

*Jane Brown, 1101 Shawn Ct
Tavara FL 32278 - 352-742-0230*

cell phone 607-769-3449



2006 HONDA GOLDWING 1800
 Excellent Condition
 No damage - Never been down
 73,000 easy miles
 Passenger arm rests
 Vented windshield
 Outboard foot pegs
 Driver seat back rest
 Spare key & remote
 Chrome front brake rotor covers
 Chrome vent covers
 Chrome front radio speaker covers
 Chrome rear view mirror claws
 Chrome mid-section
 Chrome upper trunk molding
 Smoke color Wind-Wings with turn stops
 New front fork seals, bushings and oil
 Front fork brace

Excellent Condition
 No damage - Never been down
 73,000 easy miles.
 Black with lots of chrome
 Always garaged
 Owners manual & maintenance log
 Nearly new tires: Front - Bridgestone Exedra
 Back - Dunlap Elite 3
 CB radio
 AM, FM, Weather Band radio
 Cruise Control
 Steering bearing has been upgraded
 All recalls have been complied with
 Everything works fine.
 There are no known issues with the bike.
 I have upgraded to a newer Goldwing.

Kelley Blue Book Retail: \$14,150 Selling price: \$13,495 keithbalon@embarqmail.com
 Tallahassee, Florida, USA 850 893-4983

FOR SALE:

Tri-fold motorcycle loading ramp
 \$100

Jack Schardine-850 212 1930

jackschardine@comcast.net



Price reduced !!!!! Now \$11,999



2014 MID ATLANTIC RETREAD RALLY

May 15 – 17, 2014

EARLY REGISTRATION – WEDNESDAY MAY 14TH - 1 PM – 4 PM

Headquarters: Bird-In-Hand Family Inn & Restaurant, Rt. 340, Bird In Hand, PA 800-537-2535
www.bird-in-hand.com

Mention "Retreads Motorcycle Club" Special Room Rates will be held until April 1, 2014
Registration & Hospitality Room Open – 8:00 am – 4:00 pm Thursday/Friday – Close @ Noon Saturday

RALLY PACKAGE INCLUDES

- Wednesday Evening Ice Cream Social & Get Together
- Thursday Evening - Shady Maple Dutch Treat Dinner
- Friday Evening Barbeque
- Guided Tour and Self-Guided Tours
- Charity Poker Run, 50/50
- Thursday Evening Professional Entertainment
- Breakfast Buffet (Friday or Saturday - Your Choice)
- Saturday Night Family Style Dinner at Good N' Plenty
- Rally Pins to the first 350 people
- All You Can Eat Ice Cream in the Hospitality Room

ADDITIONAL MOTELS NEARBY

Amish Country Motel - Rt. 340, Bird In Hand, PA – 800-538-2535
 Best Western – Intercourse - Rt. 772 & Rt. 340, Intercourse, PA 717-768-3636
 Best Western Plus Revere Inn & Suites - 3063 Lincoln Highway E. (Rt. 30), Paradise, PA - 717-687-7663
 Carriage Corner Bed & Breakfast - 3705 East Newport Road (Rt. 772), Gordonville, PA – 717-768-3059
 Country Living Inn – 2406 Old Philadelphia Pike, Bird In Hand, PA – 717-295-7295
 Country Squire Motor Inn - 504 East Main Street, New Holland, PA - 717-354-4166
 Countryside Motel – Rt. 896, Ronks, PA – 717-687-8431
 Dutch Treat Motel – 265 Herr Rd (At Rt. 896), Ronks, PA – 717-687-7998
 Eastbrook Inn – 21 Eastbrook Rd (at Rt. 896), Ronks, PA – 717-397-2550
 Hershey Farm Motor Inn – Rt. 896, Strasburg, PA – 717-687-8635
 Old Amish Inn – 33 Eastbrook Road (at Rt. 896), Ronks, PA – 717-393-3100
 Quiet Haven Motel – 2556 Siegrist Road, Ronks, PA – 717-397-6231
 Smoketown Motor Lodge – Rt. 896, Smoketown, PA – 717-397-6944
 Spruce Lane Lodge – 2439 Old Philadelphia Pike (Rt. 340), Smoketown, PA – 800-446-4901
 Travelers Rest – 3701 Old Philadelphia Pike (Rt. 340), Intercourse, PA – 717-768-8731
 Camping – Country Acres – 20 Leven Rd., Gordonville, PA – 717-687-8014
 Camping – Beacon Hill Camping – Rt. 772, Intercourse, PA – 717-768-8775
 Other motels in the area can be found at www.padutchcountry.com

Make check payable & mail to: Mid Atlantic Retreads, 37 E. Wolfert Station Road, Mickleton, NJ 08056 - 856-241-8979

Rider: _____ Co-Rider: _____

Address: _____

Card #: _____ Card #: _____ Phone: _____

Email Address (To Receive Confirmation) or send SASE to address above: _____

of People ____ x \$60.00 each with Banquet (\$70.00 each AFTER April 14, 2014) = \$ ____

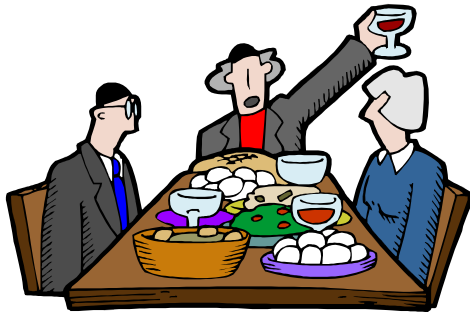
of People ____ x \$60.00 each without Banquet (\$60.00 each AFTER April 14, 2014) = \$ ____

OPTIONAL – Shady Maple Dutch Treat Dinner – Thursday Night ____ # of People x \$17.00 = \$ ____

LONG SLEEVE T SHIRTS (NO POCKETS): ____ S ____ M ____ L ____ XL ____ XXL ____ XXXL = \$ ____

\$14.00 per shirt for S, M, L & XL or \$16.00 per shirt XXL and \$17 XXXL TOTAL: = \$ ____

You must be 40 years of age and have a current membership card to be eligible for event-sponsored awards. Guests, sponsored by a Retread are always welcome. No trophies for trailered bikes.



2014 BIKE WEEK SUNSHINE REGION FELLOWSHIP LUNCHEON

WHEN: Saturday, March 15th 11:00 am till 1:30 pm

WHERE: Duff's Cafeteria, Sunshine Mall
2400 S. Ridgewood Ave. Daytona Beach
(COST ABOUT \$8.00 FOR LUNCH)

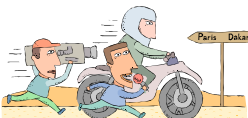
Our guest speaker will be announced at a latter time

WHO: All Florida, out of state and potential new Retreads members are invited.

MORE INFO: Jack Schardine 850 212 1930
Or email at jackschardine@comcast.net

DOOR PRIZES---BUY RETREAD GOODIES---PLAY 50/25/25

See you there!!



RETREAD'S 2014 INTERNATIONAL MAY 5TH - 8TH, 2014

Branson the ♥ of America

Hang on to your seats!
Ride the Curves and Hills
Of the Ozarks

Hotel	Headquarters	Hotel
Lodge at the Falls	Branson KOA	Yellow Rose Inn
.5 miles from KOA	397 Animal Safari Road	1 mile from KOA
lodgeatthefalls.com	Branson, MO	bransonyellowrosehotel.com
877-681-6766	bransonkoa.com	877-577-1795
\$56. Includes	800-562-4177	\$56. Includes
Taxes and Hot Breakfast	RV Sites \$40 + taxes	Taxes and Hot Breakfast
Reservation Deadline	Reservation Deadline	Reservation Deadline
March 15, 2014	March 15, 2014	March 15, 2014



So much to do, so little time!

Sunday, May 4th: Early Bird Ride and Tour: Turpentine Creek Wildlife Refuge \$10 ea (opt)

Sunday, May 4th: Evening Early Registration

Guided and Self Guided Tours, TBA

Ice Cream Social Poker Run

Retreads Road Kill Dinner Theater

Mystery Theater (killerflea.com) (opt) \$25, includes tax and tip

Fantastic Caverns (fantasticcaverns.com) (opt) \$16.50 ea

International Banquet & Trophies



Have ? Jim & Shanett Rhoads

missouri-retreads@gmail.com

417-226-4711

Registration Form Attached

Rally Registration Required For All Events

Guest of Members Welcome

Trailed Bikes Not Qualified For Awards



"WHAT GOES BETTER WITH
ROAD KILL...RED OR WHITE?"

Hospitality Room

KOA

Morning - 10PM

Socialize/Games

Drinks

We reserve the
right to change
scheduled events

Weather may
change or prevent
scheduled events



Application for Membership

Sunshine



Region



Retreads® Motorcycle Club International, Inc.

Please type or print

Membership is valid from January 1st through December 31st

**** This information must be completed before a membership card is issued.**

New Membership Renewal Membership

Retreads® Group Name _____
 Area Rep Group Director Assistant Group Director

**** Name:** _____ ****Co-Rider:** _____

**** Address:** _____ ****City:** _____

****State:** _____ ****Zip:** _____ Phone : (____) _____

E-mail Address: _____
 Yes, send me the news letter using E-mail

**** Applicant's Birthdate** _____ ****Co-Rider's Birthdate** _____

Recruited by: _____

Donation \$ _____ \$ 15.00 single person or \$ 20.00 for couple per year.

Make checks payable to: Sunshine Region Retreads

Send application to: Sunshine Region Directors
Jack and Carol Schardine Phone 850 212 1930
1434 Golden Park Ct. E-mail sunshinedirector@comcast.net
Tallahassee, FL 32303

I understand that the Retreads® cannot assume responsibility for any aspect of my safety. I understand that my participation in any Retreads® activity is strictly voluntary and further, I fully release and hold harmless the Retreads® Motorcycle Club, International, Inc. from any loss to my person or property.

<u>For Region use only</u>	
Card #(s)	_____
Ck#	_____
Cash	_____

**** Signature** _____

**** Co-Rider** _____

**** Date** _____